

.84 Acre flat and cleared site at a lighted intersection on Hwy. 51 at Flinthill Road. In York County zoned UD.



REID Real Estate

"the right way"



W. Reid Smith

cell: 803-417-7516

reid@reidrealestate.net

REID Real Estate

1779 Bechtler Rd.

Edgemoor, SC 29712

www.reidrealestate.net



Price is \$550,000

Hwy. 51 is a well established' commercial corridor going from York County to Pineville, and the many business parks in the southern part of Mecklenburg county.

Lower photo shows how the site will look after the new intersection is completed.

Present acreage is 1.60 acres but .75 has already been sold to the DOT. No definite date has been announced for when the new intersection will be completed.

2022 SC DOT traffic count was 13,900 vehicles a day.

All information is deemed to be accurate but not guaranteed or warranted by REID Real Estate its Agents nor the Property Owner/s. All information subject to change.

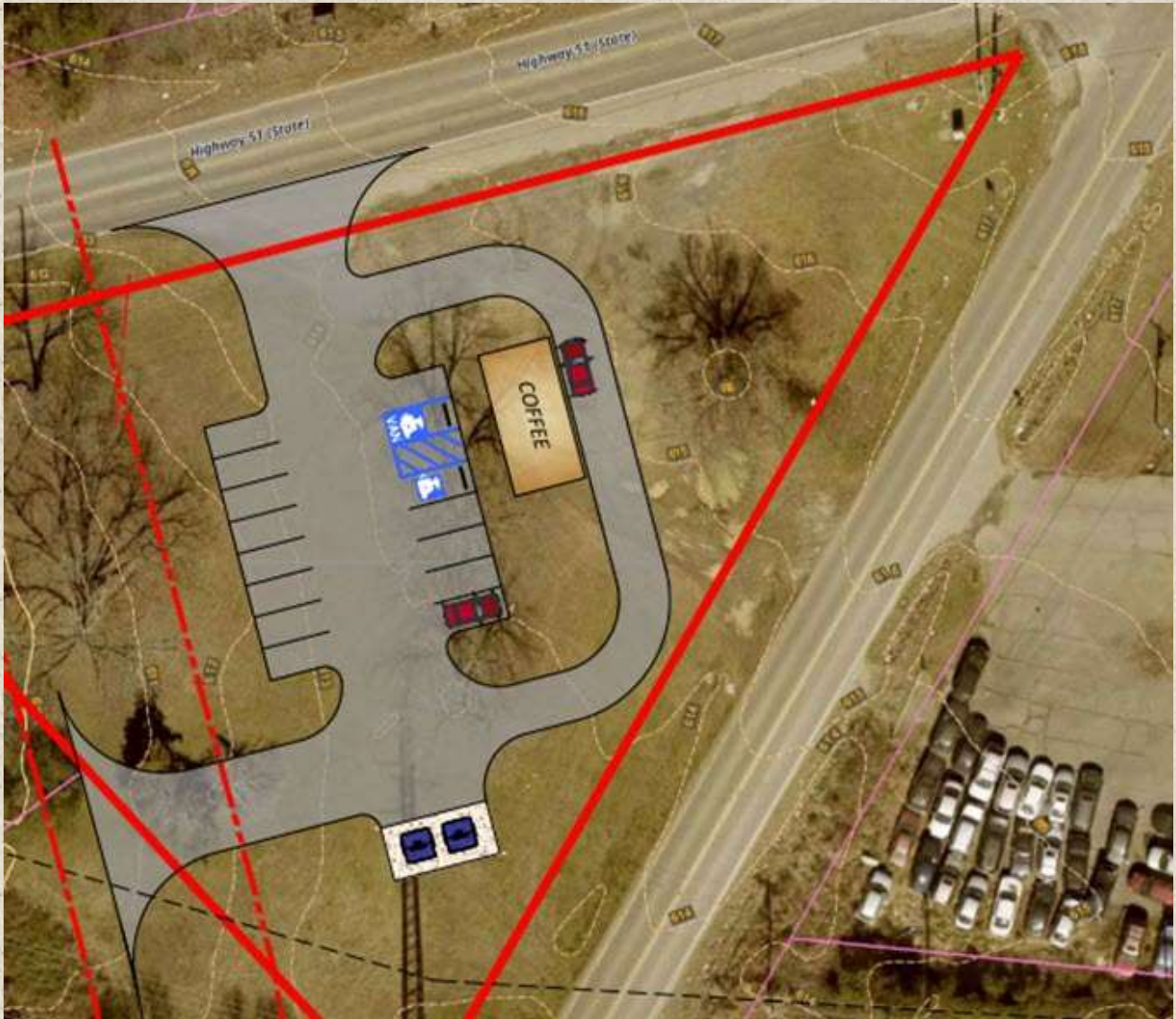
Photo below shows view from Hwy. 51 going east toward Pineville, NC.
This site has approximately 350' of front on 51 & 330' on Flint Hill Rd.



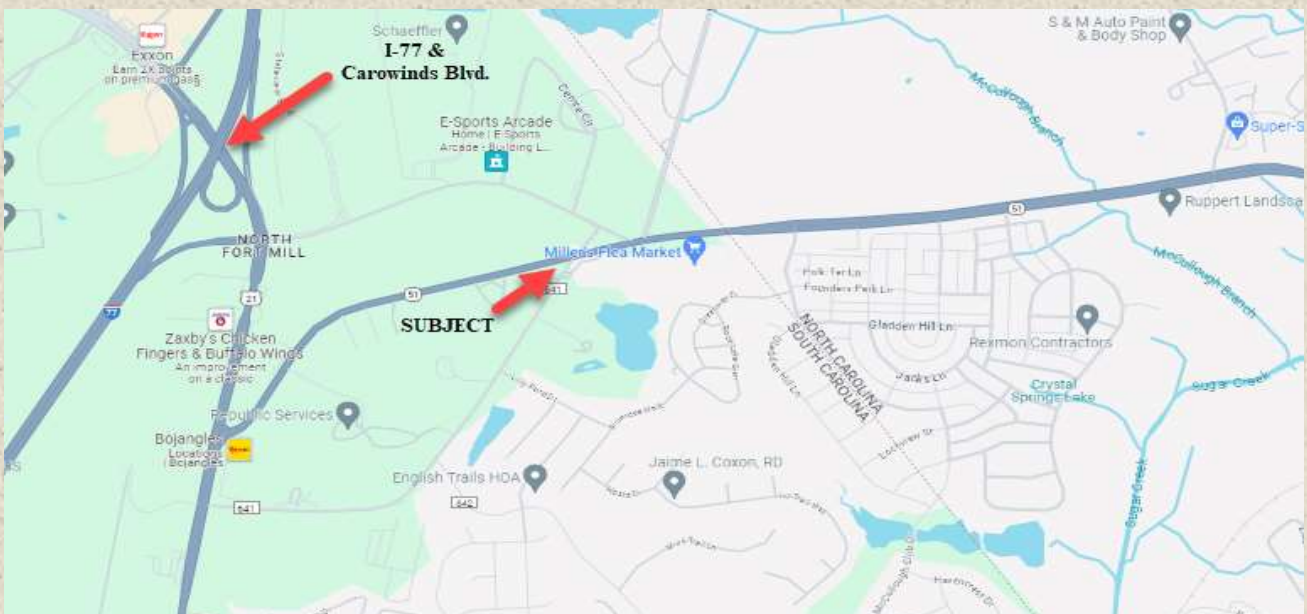
Photo above shows the view along Flint Hill Road.
Co. water line along Hwy. 51, sewer line on Flint Hill Rd.

All information is deemed to be accurate but not guaranteed or warranted by REID Real Estate
its Agents nor the Property Owner/s. All information subject to change.

Preliminary drawing for a drive through Coffee bar:



Call for more details on this site plan.



All information is deemed to be accurate but not guaranteed or warranted by REID Real Estate
its Agents nor the Property Owner/s. All information subject to change.